

TECH TECH CONTROLLERS

USER MANUAL EU-260

EN



www.tech-controllers.com

TABLE OF CONTENTS

I.	Safety	3
II.	Device description	4
III.	Channel change	5
IV.	Technical data	6

I. SAFETY

Before using the device for the first time the user should read the following regulations carefully. Not obeying the rules included in this manual may lead to personal injuries or controller damage. The user's manual should be stored in a safe place for further reference. In order to avoid accidents and errors it should be ensured that every person using the device has familiarized themselves with the principle of operation as well as security functions of the controller. If the device is to be sold or put in a different place, make sure that the user's manual is there with the device so that any potential user has access to essential information about the device.

The manufacturer does not accept responsibility for any injuries or damage resulting from negligence; therefore, users are obliged to take the necessary safety measures listed in this manual to protect their lives and property.



WARNING

- The device should be installed by a qualified electrician.
- The regulator should not be operated by children.



NOTE

- Any use other than specified by the manufacturer is forbidden.
- Before and during the heating season, the controller should be checked for condition of its cables. The user should also check if the controller is properly mounted and clean it if dusty or dirty.

Changes in the merchandise described in the manual may have been introduced subsequent to its completion on March 19th 2020. The manufacturer retains the right to introduce changes to the structure. The illustrations may include additional equipment. Print technology may result in differences in colours shown.

Care for the natural environment is our priority. Being aware of the fact that we manufacture electronic devices obligates us to dispose of used elements and electronic equipment in a manner which is safe for nature. As a result, the company has received a registry number assigned by the Main Inspector of Environmental Protection. The symbol of a crossed out rubbish bin on a product means that the product must not be thrown out to ordinary waste bins. By segregating waste intended for recycling, we help protect the natural environment. It is the user's responsibility to transfer waste electrical and electronic equipment to the selected collection point for recycling of waste generated from electronic and electrical equipment.



II. DEVICE DESCRIPTION

EU-260 is a universal wireless set intended to be used with TECH controllers using RS communication. The set consists of two modules:

1. V1 module – intended for the main controller with RS communication. It should be connected to a device with its own power supply.



2. V2 module – intended for the following devices: additional modules with RS communication e.g. EU-280 room regulator, EU-65 GSM module, EU-505 Internet module etc.



NOTE

In order to achieve the maximum aerial sensitivity, EU-260 v1 should be installed at least 50 cm from any metal surface, piping or the CH boiler.



III. CHANNEL CHANGE



NOTE

The default communication channel is „37”. There is no need to change the communication channel if the device operation is not interrupted by any radio signal.

In case of any radio interference, it might be necessary to change the communication channel. In order to change the channel, follow these steps:

1. Press and hold the **channel change button**. When the control light on the sensor flashes once, you have started setting the first digit.
2. Hold the button and wait until the control light flashes (goes on and off) the number of times indicating the first digit of the channel number.
3. Release the button. When the control light goes off, press the channel change button again. When the control light on the sensor flashes twice (two quick flashes), you have started setting the second digit.
4. Hold the button and wait until the control light flashes the desired number of times. When the button is released, the control light will flash twice (two quick flashes). It means that the channel change has been completed successfully.

Errors in channel change procedure are signalled with the control light going on for about 2 seconds. In such a case, the channel is not changed.



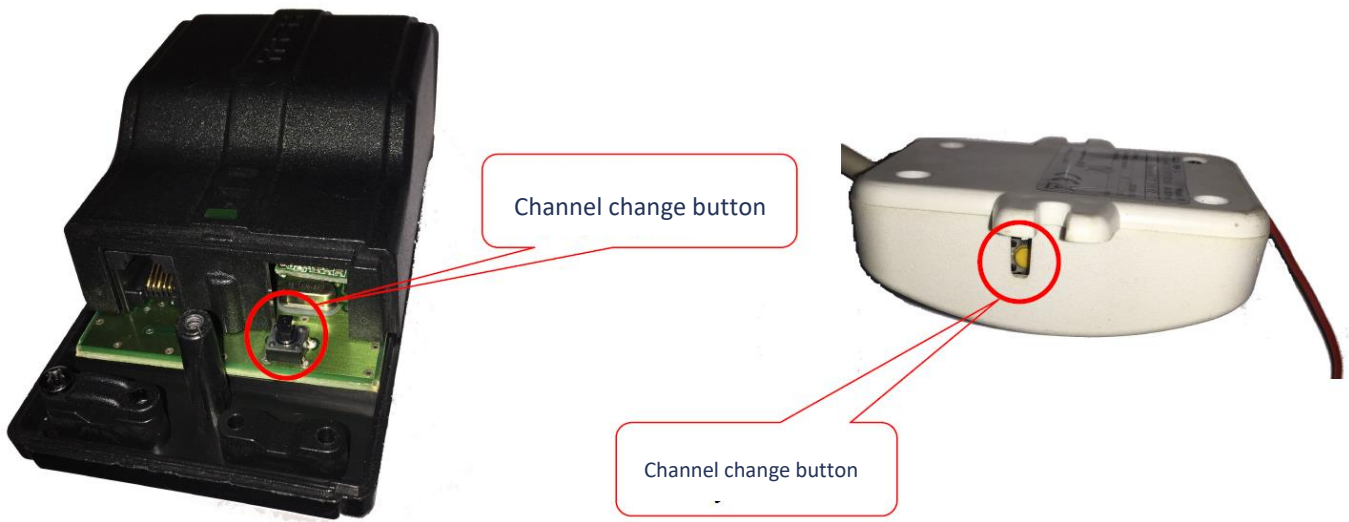
NOTE

In case of setting a one-digit channel number (channels 0-9), the first digit should be 0.



UWAGA

Procedurę należy wykonać niezależnie dla modułu EU-260v1 oraz EU-260v2, kolejność operacji jest dowolna.



IV. TECHNICAL DATA

	EU-260 v1	EU-260 v2
Power supply	12V DC	230V ±10% /50Hz
Operation temperature	5°C÷50°C	5°C÷50°C
Frequency	868Mhz	868Mhz

TECH TECH CONTROLLERS

EU Declaration of Conformity

Hereby, we declare under our sole responsibility that **EU-260** manufactured by TECH STEROWNIKI II Sp. z o.o., head-quartered in Wieprz Biała Droga 31, 34-122 Wieprz, is compliant with Directive **2014/53/EU** of the European parliament and of the Council of 16 April 2014 on the harmonisation of the laws of the Member States relating to the making available on the market of radio equipment, Directive **2009/125/EC** establishing a framework for the setting of ecodesign requirements for energy-related products as well as the regulation by the MINISTRY OF ENTREPRENEURSHIP AND TECHNOLOGY of 24 June 2019 amending the regulation concerning the essential requirements as regards the restriction of the use of certain hazardous substances in electrical and electronic equipment, implementing provisions of Directive (EU) 2017/2102 of the European Parliament and of the Council of 15 November 2017 amending Directive 2011/65/EU on the restriction of the use of certain hazardous substances in electrical and electronic equipment (OJ L 305, 21.11.2017, p. 8).

For compliance assessment, harmonized standards were used:

PN-EN IEC 60730-2-9 :2019-06 art. 3.1a Safety of use

PN-EN 62479:2011 art. 3.1 a Safety of use

ETSI EN 301 489-1 V2.2.3 (2019-11) art.3.1b Electromagnetic compatibility


ETSI EN 301 489-3 V2.1.1:2019-03 art.3.1 b Electromagnetic compatibility

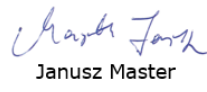
ETSI EN 300 220-2 V3.2.1 (2018-06) art.3.2 Effective and coherent use of radio spectrum

ETSI EN 300 220-1 V3.1.1 (2017-02) art.3.2 Effective and coherent use of radio spectrum

EN IEC 63000:2018 RoHS

Wieprz dn.19.03.2020


Paweł Jura


Janusz Master

Prezisi firmy

**TECH
TECH
CONTROLLERS**

Central headquarters:

ul. Biała Droga 31, 34-122 Wieprz

Service:

ul. Skotnica 120, 32-652 Bulowice

phone: **+48 33 875 93 80**

e-mail: **serwis@techsterowniki.pl**

www.tech-controllers.com